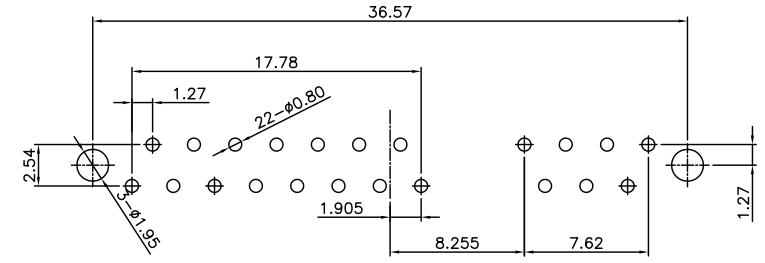
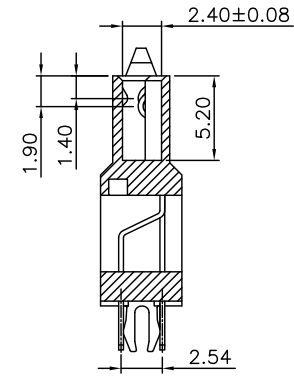
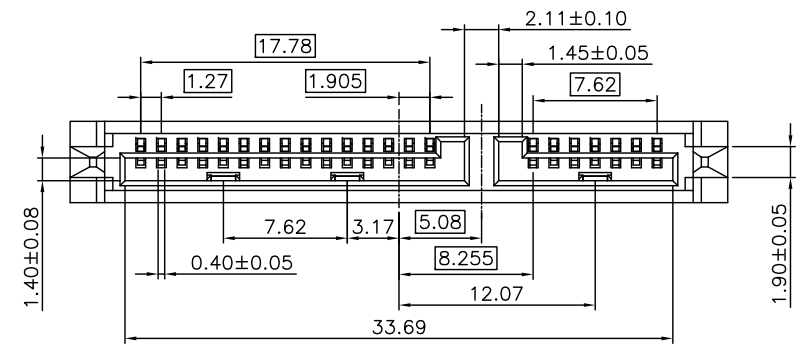


PART NO. SEE TABLE

REVISIONS			
LTR	DESCRIPTION	Drawing	DATE
A	RELEASE NEW PRODUCT	GARY	05/17/08

CUSTOMER DRAWING

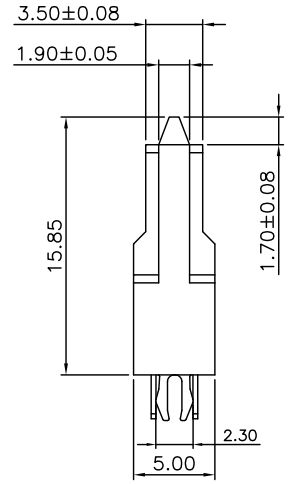
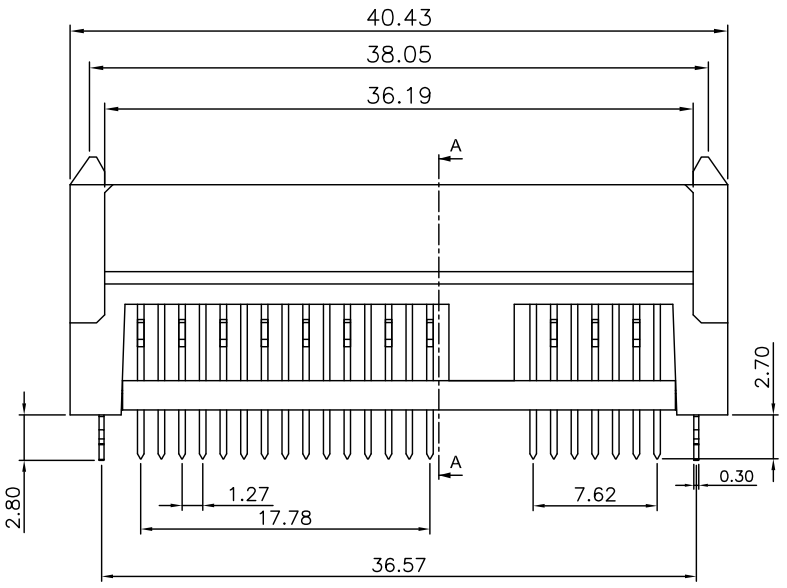


RECOMMENDED PCB LAYOUT

TABLE

007-01-00663	15 U" GOLD	LCP BLACK	NOTE
PART NO.	PLATED	PLASTIC&COLOR	GP

NOTE:
 1.MATERIAL :
 BASE : HIGH TEMPERATURE THERMOPLASTIC UL94V-0,
 TERMINAL:COPPER ALLOY,THICKNESS = 0.30 mm
 FORKLOCK:COPPER ALLOY,THICKNESS = 0.30 mm
 2,PLATING:
 CONTACT:GOLD OVER 50u" MIN NICKEL UNDERPLATE
 SOLDER TAIL:150u"MIN MISTY TIN 50u" MIN NICKEL UNDERPLATE
 GOLD SPECIFICATION:SEE TABLE
 3.ELECTRONICAL SPECIFICATION:
 CURRENT RATING: 1.5 AMPERE PER CONTACT
 CONTACT RESISTANCE: 30 MILLIOHMS MAX.
 INSULATION RESISTANCE: 1000 MEGOHMS MIN.
 DIELECTRIC WITHSTANDING VOLTAGE: 500 VDC.
 OPERATING TEMPERATURE: -40°C~+85°C



DIMENSION ARE MILLIMETERS TOLERANCES ARE : DECIMALS .X ± 0.20 .XX ± 0.15 ANGLE: X ± 3'	APPROVALS		DATE	TITLE:			
	DRAWN	GARY	05/17/08	SATA 22P SOCKET 加高魚叉型-1			
	CHECKED						
	APPROVALS						
	SIZE mm	SCALE : 1 : 1	DRAWING NO. 000622	REV. A			
	ID NO.	XXXXXXXXXX	SHEET 1 OF 1				

NO	DESCRIPTION	QTY	UNIT	DO NOT SCALE DRAWING