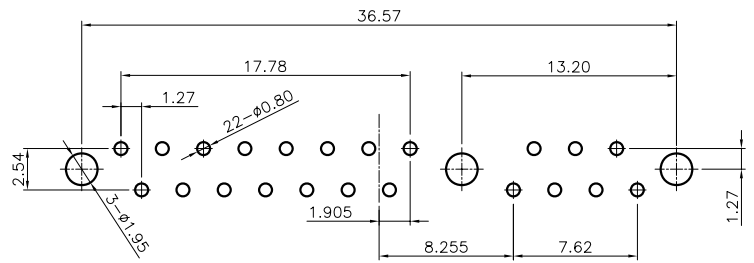
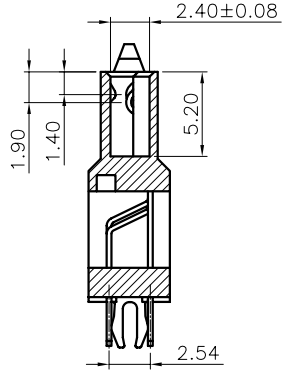
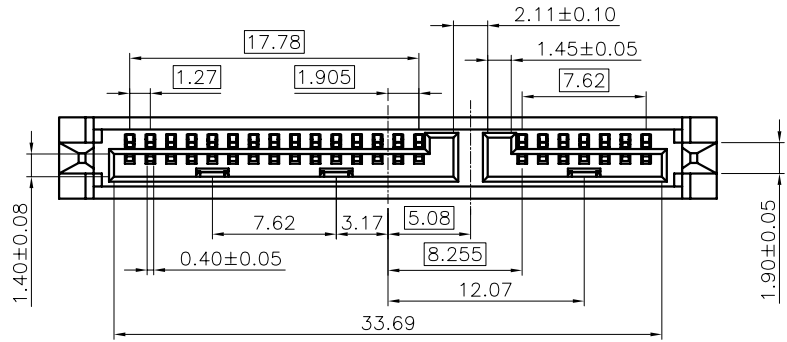


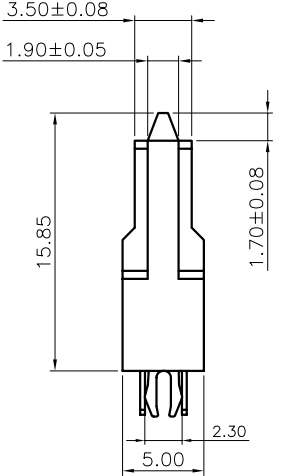
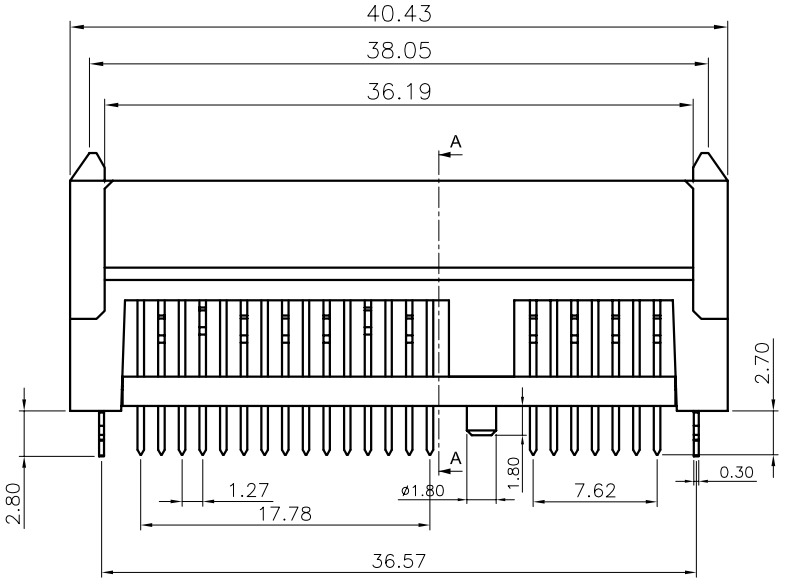
CUSTOMER DRAWING

REVISIONS			
LTR	DESCRIPTION	Drawing	DATE
A	RELEASE NEW PRODUCT	GARY	09/21/07



RECOMMENDED PCB LAYOUT

- NOTE:
- MATERIAL :
 BASE : HIGH TEMPERATURE THERMOPLASTIC UL94V-0,
 TERMINAL: COPPER ALLOY, THICKNESS = 0.30 mm
 FORKLOCK: COPPER ALLOY, THICKNESS = 0.30 mm
 - PLATING:
 CONTACT: GOLD OVER 50u" MIN NICKEL UNDERPLATE
 SOLDER TAIL: 150u" MIN MISTY TIN 50u" MIN NICKEL UNDERPLATE
 GOLD SPECIFICATION: SEE TABLE
 - ELECTRONICAL SPECIFICATION:
 CURRENT RATING: 1.5 AMPERE PER CONTACT
 CONTACT RESISTANCE: 30 MILLIOHMS MAX.
 INSULATION RESISTANCE: 1000 MEGOHMS MIN.
 DIELECTRIC WITHSTANDING VOLTAGE: 500 VDC.
 OPERATING TEMPERATURE: -40°C~+85°C
 - MEETS THE REQUIREMENTS OF DIRECTIVE 2002/95/EC OF THE EUROPEAN PARLIAMENT AND OF THE COUNCIL OF 27 JANUARY 2003 ON THE RESTRICTION OF THE USE OF CERTAIN HAZARDOUS SUBSTANCES IN ELECTRICAL AND ELECTRONIC EQUIPMENT (ROHS)



TABLE

007-01-00499	15 U" GOLD	LCP BLACK
PART NO.	PLATED	PLASTIC&COLOR

DIMENSION ARE MILLIMETERS TOLERANCES ARE : DECIMALS .X ± 0.20 .XX ± 0.15 ANGLE: X ± 3°	APPROVALS		DATE	PART NO.			
	DRAWN	GARY	09/21/07	007-01-00499			
	CHECKED			TITLE:			
	APPROVALS			SATA 22P SOCKET 加高魚叉型			
	SIZE	SCALE :	DRAWING NO.	REV.			
	mm	1 : 1	000533	A	ID NO.	XXXXXXXXXX	SHEET 1 OF 1

DESCRIPTION

NO	4	3	2	1
----	---	---	---	---